

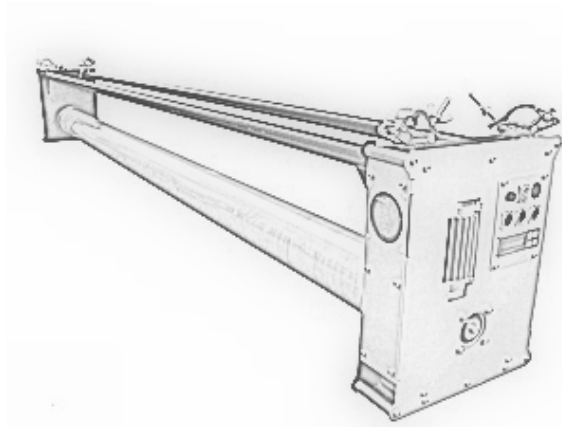
ROLL DOWN

DMX-solution for textiles on stage

The Roll Down is a large motorised aluminium tube, with mounting for stage curtain or other textiles. You control the Roll Down from the lighting desk via the integrated DMX interface. Variable speed and precise positioning provides an easy and efficient tool for curtain motion. A 16-bit DMX channel controls the position, while a second channel controls the speed of the movement. The movements are easily implemented in a cue list in the lighting desk, and integrated into the show.

The Roll Down system is available as a custom solution, with adaptation of curtain-width, working height, speed and lifting capacity. The Roll Down curtain roll width can be shortened or extended as needed. The metal frame is extended or shortened in the same way.

The Roll Down system was designed for the Eurovision finale show in Oslo, Norway, 2010. The system has been used in shows and performances worldwide since then, fx Disney on Ice, 2016.



ROLL DOWN

Technical specifications - example - 3 meter unit

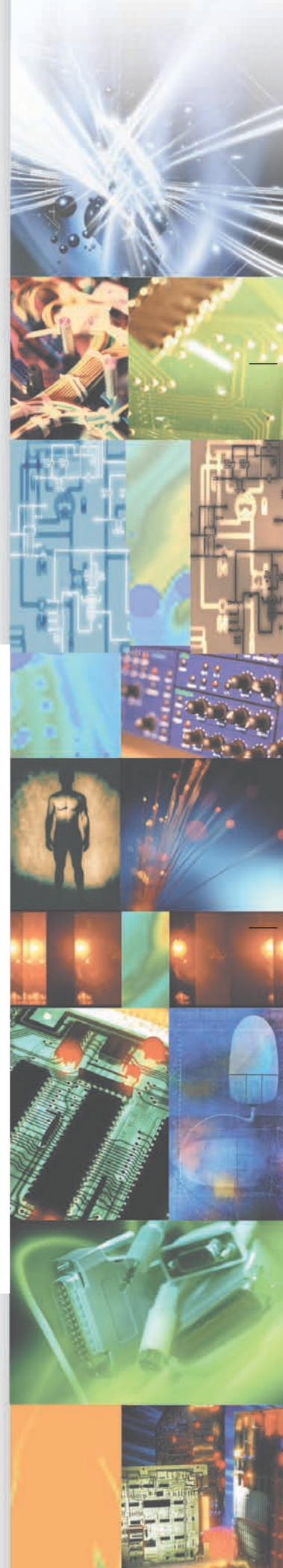
Power supply:	210-250 VAC 47-63 Hz.
Power Consumption:	Max. 500 Watt.
Motor:	3-phase AC frequency controlled.
Lifting speed:	Variable, up to 1 m/s
Lifting capacity:	Standard 25 kg./55,1 lbs.
Lifting height:	Standard 0 to 12 meters.
Textile width:	Max 6 meters. Can be adjusted as needed.
Control signal:	DMX 512 - 6 DMX channels
Noise level at max speed:	50 dBA
Length: motor unit:	25 cm / 9,8 inch. + working length.
Weight motor unit:	30 kg (66,1 lbs)

PLEASE specify how you want to use the Roll Down and we will design length and capacity accordingly.

ORDERING AND INFORMATION:

www.wahlberg.dk

Sales enquiries: sales@wahlberg.dk





Wahlberg Light & Motion Design is a creative company devoted to the invention, design and production of specialized technical solutions for theatre- and dance-companies, artists' installations, promotion events, advertising and solo-artists. Our background is in the entertainment industry and we have developed a series of unique products that solve many of the daily challenges in the stage area. Products we continuously develop in order to strengthen the quality and the specific needs of our individual clients from all over the world.

We worked with:

Eurovision Song Contest, 2015 (AT), The Danish National Theater (DK), Danish Broadcasting Company (DK), Grand Ballet Canadiens (CA), Renault car company (FR), All Access Staging & Productions (USA), Scottish Ballet (GB), Feld Entertainment (USA), Alibi Nightclub (IE), ChasClarkson (AUS), Arup Architects (GB), Stage Tech Limited (HK), Night of the Proms (BE), Akram Khan- dance company (GB), CNN (USA), Zaha Hadid Sade (GB/USA), Mylene Farmer (FR), Miguel Bosé (CO), Camilá (MX) and many more.

ROLL DOWN

DMX-controlled solution for textiles on stage

- Variable speed and precise positioning
- Simple display menu for figuration
- Available as costum solution :
adapting curtain width,
working height, speed
and lifting capacity

